

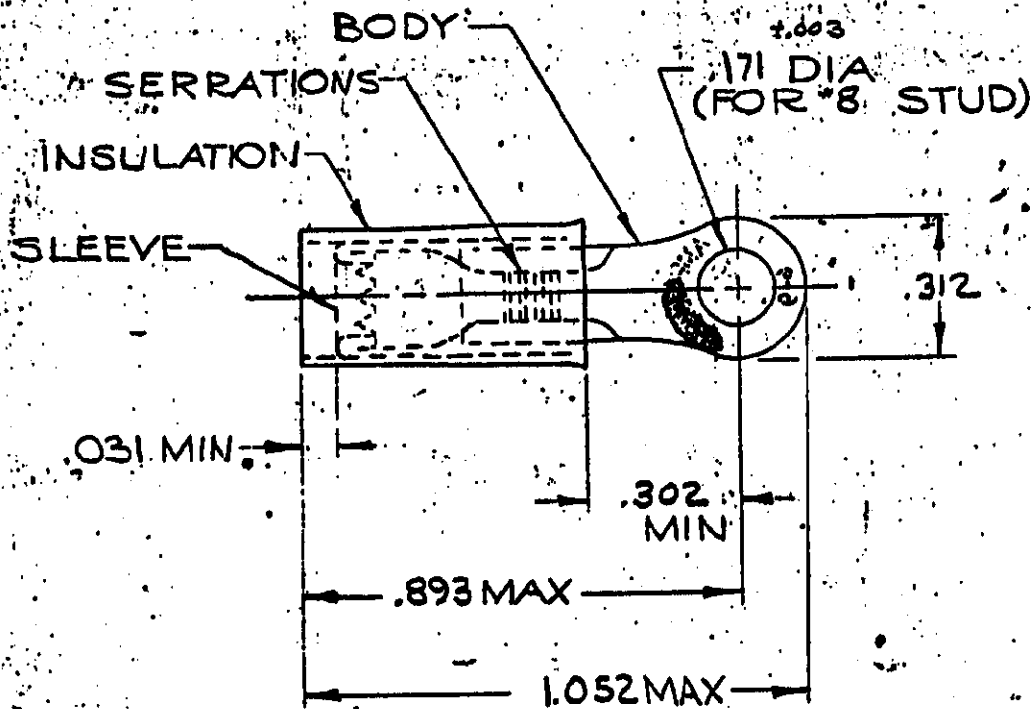
DRAWING MADE IN AMERICAN PROJECTION

LCL. PRINT. USE. **G** 14

© 1958 BY AMP INCORPORATED. ALL RIGHTS RESERVED. AMP PRODUCTS COVERED BY PATENTS AND/OR PATENTS PENDING.

REVISIONS

LTR	DESCRIPTION	DATE	APPROVED
F	REV PER XXXXXXXXXXXX	JT. 7/27/88	JY
G	REV/0720-0066-93	4-12-93	TG/mc
E	OBS. 1--1 G-3358	4-22-88	64



FOR .150 TO .230 WIRE INSULATION DIA.
TONGUE MATERIAL THK. = .040 ± .002

100	LOOSE PC. BOX	8-324915-1	BODY: COPPER (QQ-C-576) TIN PL (MIL-T-10727)
	324915 ON TAPE	8-324915-1	
	WIRE TERMINAL	324915	SLEEVE: COPPER (QQ-C-576)
			INSULATION: YELLOW YELLOW
QTY.	DESCRIPTION	PART NO.	MATERIAL & FINISH
UNLESS OTHERWISE SPECIFIED DIMENSIONS ARE IN INCHES. TOLERANCES ON: DECIMALS ± .005 ANGLES ± 5°	CONTRACT NO.		AMP INCORPORATED HARRISBURG, PENNSYLVANIA
	DR.	4-27-70	
MATERIAL SEE TABLE	CHK.	5-7-70	NAME WIRE TERMINAL P. I. D. G. RING TONGUE WIRE SIZE: 18
	APPD.	5-7-70	
	REL.	5-7-70	
	DSGN APPD.		SIZE CODE IDENT NO. NUMBER
	OTHER APPD.		A 00779 324915
SCALE NTS		SHEET 1 OF 1	

CUSTOMER DRAWING